



# NAV6 eNAVTEX System (with and without antenna) Installation and Quick Start Guide

## **MAN03345**

Issue 2.0. March 2014.

ICS Electronics Limited  
Unit V, Rudford Industrial Estate  
Ford, Arundel, West Sussex  
BN18 0BF  
United Kingdom  
Tel: +44 (0)1903 731101  
Fax: +44 (0)1903 731105  
E-Mail: [sales@icselectronics.co.uk](mailto:sales@icselectronics.co.uk)  
[support@icselectronics.co.uk](mailto:support@icselectronics.co.uk)  
Website: [www.icselectronics.co.uk](http://www.icselectronics.co.uk)

The technical data, information and illustrations contained in this publication were to the best of our knowledge correct at the time of going to print. We reserve the right to change specifications, equipment, installation and maintenance instructions without notice as part of our policy of continuous product development and improvement. No part of this publication may be reproduced, stored in a retrieval system or transmitted in any form, electronic or otherwise without permission in writing from ICS Electronics Ltd. No liability can be accepted for any inaccuracies or omissions in the publication, although every care has been taken to make it as complete and accurate as possible.

Copyright © 2013, ICS Electronics Limited. All rights reserved.

## **Important Information**

This equipment is not approved for use by SOLAS convention vessels within the Global Maritime Distress and Safety System (GMDSS)

It is intended for use by leisure craft and other non-SOLAS vessels wishing to participate within GMDSS

## **Safety Warnings**

This instrument is for use as an aid to sailors and should not lead to a reduction in the level of good seamanship required at all times

Reception of messages cannot always be guaranteed as this depends on local radio propagation

The correct magnetic variation must be input at the navigation instruments (e.g. GPS, electronic compass) for the accurate display of COG, set, waypoint bearing and heading.

# Contents

This Instruction Guide .....	4
What's in the Box?.....	4
Installing the eNAVTEX Receiver System.....	5
Fitting the NAVTEX Antenna .....	5
Fitting the NAV6 eNAVTEX Receiver Module.....	5
Connecting an eNAVTEX Receiver to your PC/Laptop .....	7
Install the NAV6 eNAVTEX App.....	12
Starting the NAV6 eNAVTEX App.....	14
Fuses .....	15
Specification.....	15
Warranty.....	16
Technical Support.....	16

Congratulations on purchasing this high quality ICS Electronics Ltd product. Please take the time to read this manual carefully as it contains some essential information regarding the operation and maintenance of the product.

We recommend that you regularly visit the ICS website [www.icselectronics.co.uk](http://www.icselectronics.co.uk) for information on updates, the availability of software upgrades, further options and support. The support pages contain frequently asked questions about the NAV6 that you may find useful. There is also a NAVTEX database providing a list of operational NAVTEX stations and their details.

The IMO and various national coastguards also operate informative websites that you may wish to visit; see [www.icselectronics.co.uk/links](http://www.icselectronics.co.uk/links).

## This Instruction Guide

This instruction guide is intended for use in conjunction with the ICS NAV6 eNAVTEX System (with and without antenna) only.

Should you require any information about operation of your NAV6 eNAVTEX system then please contact ICS Electronics or visit our web site [www.icselectronics.co.uk](http://www.icselectronics.co.uk).

## What's in the Box?

Your NAV6 eNAVTEX System should contain the following items:

- NAV6 eNAVTEX Receiver Module (Black Box)
- Passive NAVTEX Antenna with 10m Cable (NOT INCLUDED with eNAVTEX system without antenna)
- 2 x Stainless Steel Mounting Screws
- Detachable NAV6 Receiver Module Connector Strip (Green)
- eNAVTEX App (on CD)
- USB Type A to Type B lead (1m)
- Quick Start Guide

If any of these items are damaged or missing please contact the seller you purchased this product from.

# Installing the eNAVTEX Receiver System

## Fitting the NAVTEX Antenna

Select a suitable position for the NAV6 eNAVTEX Receiver Module (black box).

If the system included an ICS passive NAVTEX antenna, select a suitable position for the antenna on your boat. Install the antenna and route the cabling to the position you have selected for the NAV6 eNAVTEX Receiver Module.

If the system is supplied without an antenna i.e. For use with an existing antenna or an alternative active antenna. In this case route a 50ohm antenna cable from this antenna system to the location where the receiver will be installed.

## Fitting the NAV6 eNAVTEX Receiver Module

Turn off/remove fuses to the 12v power supply that you have selected for powering the eNAVTEX Receiver module.

Fit the NAV6 NAVTEX Receiver Module V2 using the two stainless steel screws supplied or equivalent fasteners suitable for the chosen location.

Cut the antenna cable to a suitable length such that it will reach the NAV6 NAVTEX Receiver Module V2 without pulling on the cable. Bare the Antenna cable end so that the core and screen wires are exposed and prepared suitable for connection to the detachable NAV6 Receiver Module Connector Strip (Green).

Install and connect a suitably fused power cable to the receiver from a convenient junction.

The diagram on the following page shows how to connect the system.

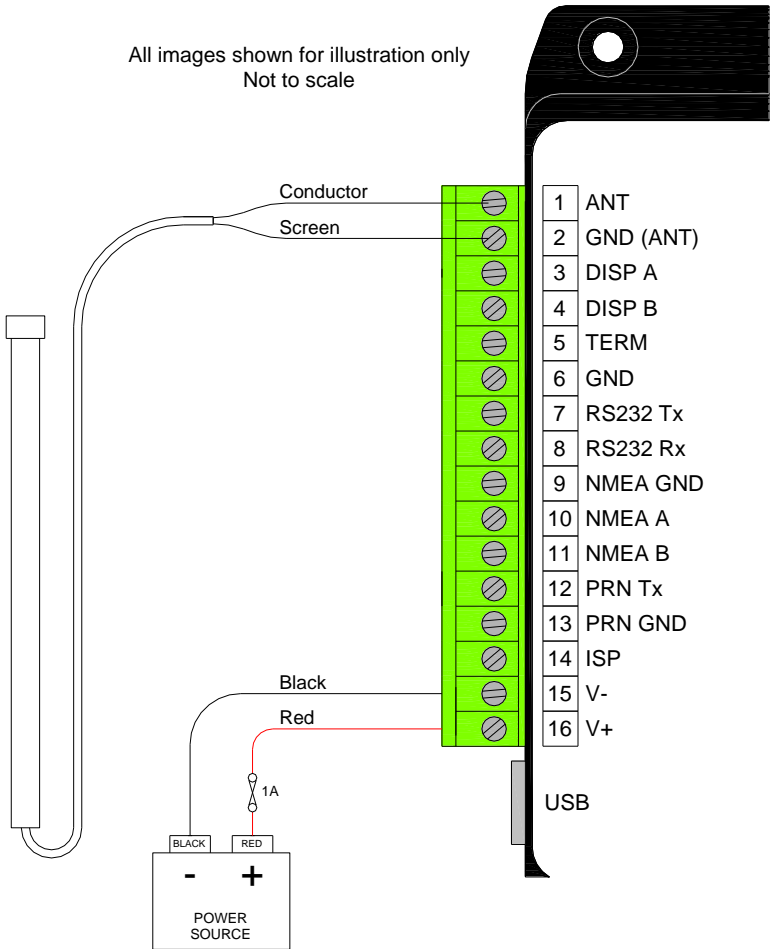
Fit the NAV6 Receiver Module Connector Strip (Green) into the NAV6 Receiver module apply power to the system.

If you are unsure about any these instructions we recommend you either contact ICS or seek the assistance of a marine electronics installer.

Turn the power back on to the circuit the new Receiver Module is now connected.

You are now ready to connect up your PC and install the software as explained in the following sections.

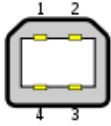
All images shown for illustration only  
Not to scale



**NAV6 eNAVTEX System Wiring Diagram**

## Connecting an eNAVTEX Receiver to your PC/Laptop

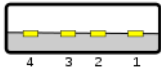
Using the supplied 1m USB lead, connect the Type B plug into the NAV6 eNAVTEX Receiver.



Type B

eNAVTEX Receiver socket

Connect the other end (Type A) into a spare USB slot on your PC/Laptop.



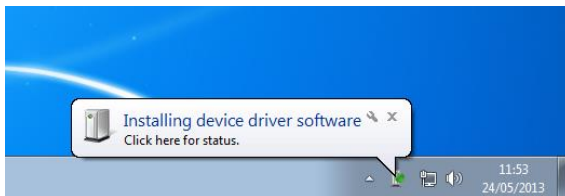
Type A

USB Type A connection socket on your PC/Laptop

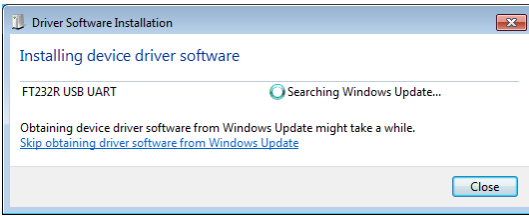
**HELPFUL ADVICE:** If the enclosed USB cable is too long or too short then a standard USB type A to type B lead can be used to replace the supplied lead. ICS stock a range of bulk head/flush mount USB sockets that may prove useful as an alternative to a fixed connection lead.

## Device driver installation

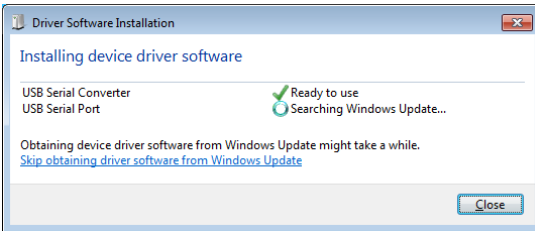
The PC will automatically detect that the eNAVTEX receiver is connected and will attempt if necessary to install drivers for the device.



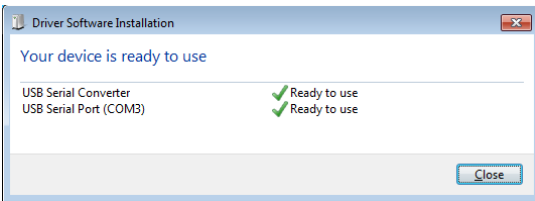
A notification will appear on the toolbar if driver software needs installing. If you click on the notification message you can see the driver installation progress. Windows update will attempt to load the latest drivers from the internet.



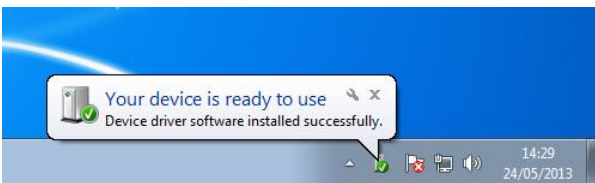
Searching the internet for the latest device drivers may take several minutes.



Windows update will install two device drivers: a USB serial converter and a USB serial port.



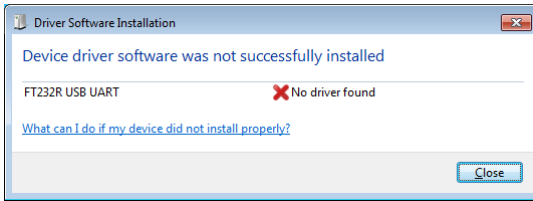
If the driver installation is successful you should get the message "Your device is ready to use" and a new USB COM port for the eNAVTEX receiver will have been created.



## Manual device driver installation

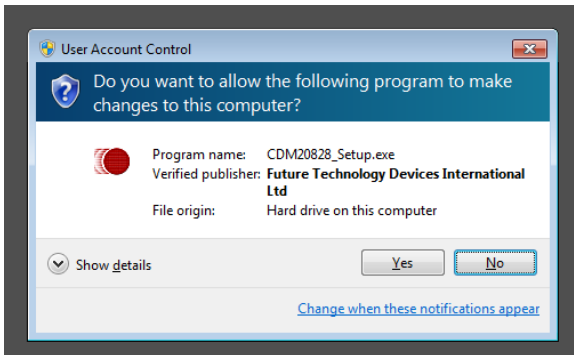
If an internet connection is unavailable, the automatic update will fail with the message "No driver found".



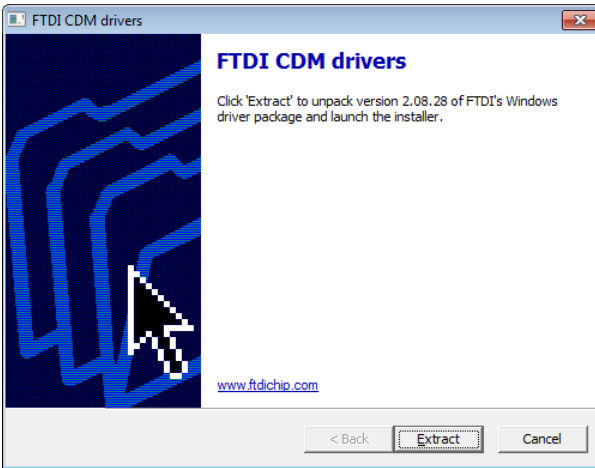


You will need to install the drivers manually from the eNAVTEX App installation CD.

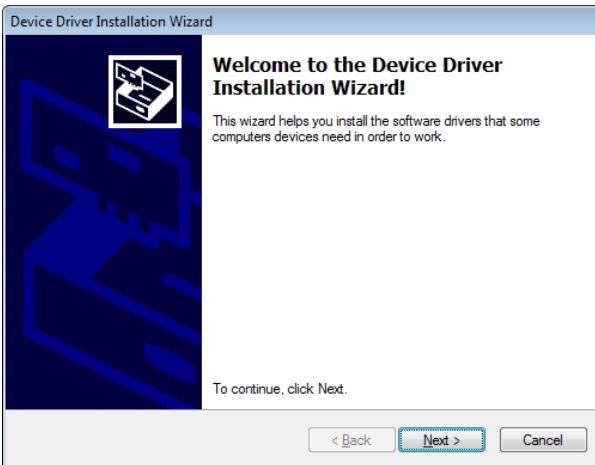
- On the Start menu, click on “Computer” to open an explorer window.
- Locate your CD drive and open it to view the folders on the CD.
- Open the “Ftdi Drivers” folder and double click on the “CDM20828\_Setup” file to install the drivers.



On a Windows 7 machine you may get a User Account Control message to confirm that you want to install the device driver. You must click the Yes button to install the device drivers.

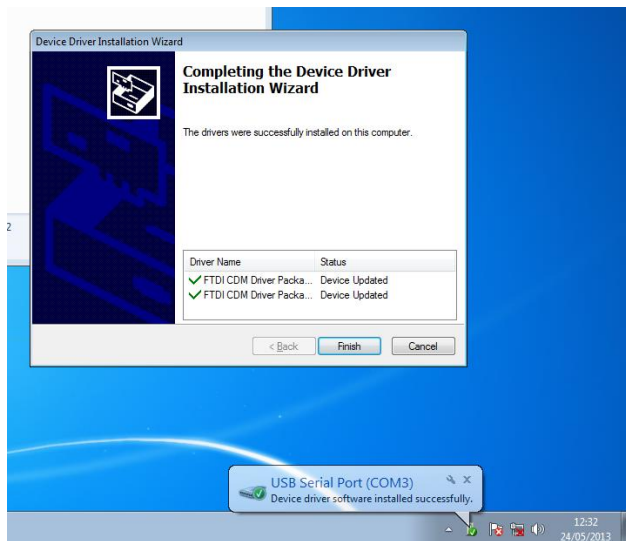


The first screen asks you to extract the driver files. Click the Extract button to proceed with the installation.



The welcome screen for the device driver installation wizard will appear when the files have been extracted. Click the Next button to proceed with the installation.

Now the device driver software will be installed.



When the driver installation is complete you should get the message “The drivers were successfully installed on the computer” and a popup message will appear on the taskbar “USB Serial Port (COMx) device driver software installed successfully”. The installed COM port is the serial port for the eNAVTEX receiver; you may want to make a note of this COM port number for later when configuring the eNAVTEX App.

## Install the NAV6 eNAVTEX App

To complete the installation follow the instructions on the NAV6 eNAVTEX App Quick Start Guide.

To install the eNAVTEX App:

Make sure you have the administrative access permissions for installing apps on your PC/Laptop.

Place the eNAVTEX app CD in your pc or laptop CD drive.

The installer should auto-run, follow the on-screen instructions for installation.

The CD includes a quick start manual to help get the eNAVTEX App installed and working with an NAV6 eNAVTEX Receiver.

If the installer does not auto-run:

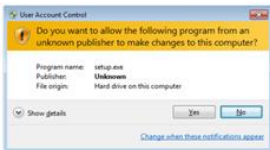
Click on "Computer" and find your CD/DVD drive.

Right mouse click and select "Open".

Double click on the "Setup.exe" file

Follow the on-screen instructions for installation.

On a Windows 7 machine you may see a User Account Control popup window when the installation runs the setup.exe program.

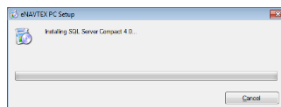
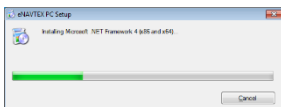


You must answer yes to install the eNAVTEX App as the program requires permission to install the application on your hard drive.

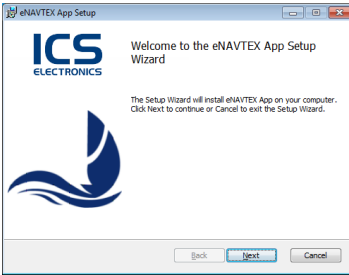
The eNAVTEX App requires the host PC to have Microsoft .NET Framework 4 and SQL Server Compact 4.0 installed. The setup.exe installer program will check your machine and if necessary offer to install these packages.

If Microsoft .NET Framework 4 and/or SQL Server Compact 4.0 needs to be installed, you will be prompted to accept the Microsoft licence agreements. You must read and accept the terms of these licence agreements to proceed with the installation.

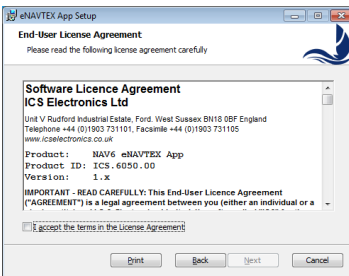
If necessary, the installer will now install Microsoft .NET Framework 4 and/or SQL Server Compact 4.0; this may take several minutes. During this time you will see one or more progress windows.



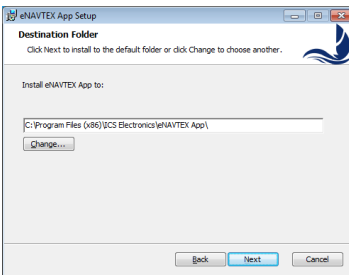
The installer is now ready to run the installation wizard to install the eNAVTEX App software.



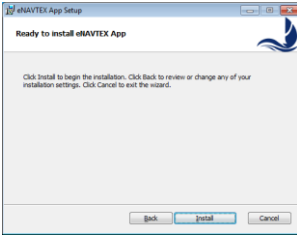
Click the next button to proceed with the installation. The eNAVTEX App software licence agreement will be displayed.



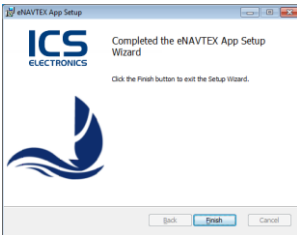
You can use the print button to print a copy for your reference; there is also a PDF copy on the installation CD. Accept the terms of the licence agreement by ticking the box "I accept the terms of the License Agreement" in order to proceed with the installation.



The Destination Folder page should be displayed. The eNAVTEX App program files will be installed in the destination folder. It is best to use the default folder shown unless there is good reason not to; e.g. the C: hard drive partition is nearly full. If you want to change the destination folder, you can click the Change button to browse to an alternative folder or edit the displayed path. Click the next button to proceed with the installation.



The installation is now ready to install the files on your machine. Click install to start copying the files.



The final page appears when the installation is complete. Click the Finish button to close the installer. The eNAVTEX App is now ready to run.

## Starting the NAV6 eNAVTEX App

From the Windows Start menu, locate the eNAVTEX App and click to launch. The installation will put the eNAVTEX App icon in the eNAVTEX App folder under All Programs and also in the quick launch

For detailed instructions on activating and using the NAV6 eNAVTEX App refer to the full user guide on the App CD or the online help.

## Fuses

The **NAV6** eNAVTEX receiver has built-in resettable fuses on the 12V inputs. This fuse will trip if the unit due to a fault condition draws excessive currents. Power must be disconnected from the unit for 10 seconds in order for a fuse to reset.

## Specification

### Power

Voltage range	10.8V to 15.6V
Consumption (Typical)	2W at 12V

### Receiver Module

Power Requirements	12V at 170mA
Antenna input	50ohm
Weight	150g
Physical Dimensions	Height 145mm, Width 94mm, Depth 35mm

### Mounting

Bulkhead mounting via two self-tapping screws (supplied)

### Connection

All connections made by screw terminal (with the exception of the PC USB connection)

### Environmental

Not for outside use

Unit must be mounted below decks in a suitable dry location

### Receive Frequency

490kHz and 518kHz

### Antenna- Passive

Length	0.5m (1.5ft)
Weight	1kg
Bottom Diameter	28mm
Fittings	1"-14 threads female
Structure	Epoxy Fibreglass
Ferrule	Chrome Plated Brass
Base Torsion Force	5N at max Wind Speed
Frequency	490-518kHz
Impedance	50 ohm
Gain	-3db half wave dipole
Polarization	Vertical
Lighting Protection	DC Ground

## Warranty

ICS Electronics Ltd warrants to the original end-user that this product will be free from defects in materials and workmanship for a period of one year from the date of purchase. During the warranty period, and upon proof of purchase, the product will be repaired or replaced (with the same or a similar model, which may be a refurbished model) at ICS Electronics' option, without charge for either parts or labour. For warranty repair, the unit must be returned, carriage pre-paid, to the ICS Electronics Ltd. dealer from whom it was first purchased. This limited warranty shall not apply if the product is modified, tampered with, misused, subjected to abnormal working conditions (including, but not limited to lightning and immersion in water) and use with power supplies and other options not specifically recommended by ICS Electronics Ltd.

Please contact us for further details of our warranty repair procedure.

## Technical Support

Should you have any question or require technical support, please contact ICS on:

ICS Electronics Limited

Unit V, Rudford Industrial Estate

Ford, Arundel, West Sussex

BN18 0BF

United Kingdom

Tel: +44 (0)1903 731101

Fax: +44 (0)1903 731105

E-Mail: [sales@icselectronics.co.uk](mailto:sales@icselectronics.co.uk)  
[support@icselectronics.co.uk](mailto:support@icselectronics.co.uk)

Website: [www.icselectronics.co.uk](http://www.icselectronics.co.uk)